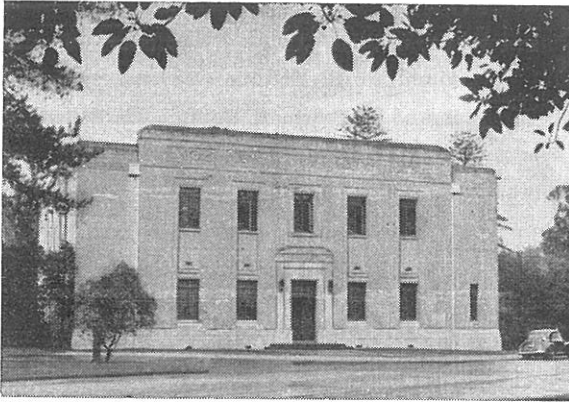


MUELLERIA

An Australian Journal of Botany

VOL. 1, No. 2 - DECEMBER 15, 1959.



NATIONAL HERBARIUM
ROYAL BOTANIC GARDENS, MELBOURNE
VICTORIA, AUSTRALIA

R. T. M. PESCOTT, Director and Government Botanist

4751/59.

CONTENTS

	Page
Australian Species of the Fungal Genus <i>Cordyceps</i> — <i>J. H. Willis</i> ..	67
Orthography of Certain Specific Epithets— <i>J. H. Willis</i>	90
Reduction of the Lichen Genus <i>Bibbja</i> <i>J. H. Willis</i> — <i>J. H. Willis</i> ..	91
Notes on the Vegetation of Eucla District, W.A.— <i>J. H. Willis</i> ..	92
Plants of the Recherche Archipelago, W.A.— <i>J. H. Willis</i>	97
New Species and Varieties of <i>Ptilotus</i> R.Br. (Amaranthaceae)— <i>Gerhard Bent</i>	101
Reinstatement of <i>Calotis suffruticosa</i> Domin (Compositae)— <i>Gwenda L. Davis</i>	109
Two New Australian Species of <i>Brachycome</i> Cass. (Compositae)— <i>Gwenda L. Davis</i>	111
Studies in <i>Mimosaceae</i> Part 1— <i>A. B. Court</i>	114

STANDARD ABBREVIATIONS FOR HERBARIA.

MEL	National Herbarium, Royal Botanic Gardens, Melbourne.
NSW	National Herbarium, Royal Botanic Gardens, Sydney.
BRI	Botanic Museum and Herbarium, Botanic Gardens, Brisbane.
PERTH	State Herbarium of Western Australia, Perth.
AD	State Herbarium, Botanic Garden, Adelaide.
HO	Herbarium of Tasmanian Museum, Hobart (at Botany Dept., University).
CANB	Herbarium, Division of Plant Industry, C.S.I.R.O., Canberra
K	Herbarium, Royal Botanic Gardens, Kew, England.
BM	British Museum of Natural History (Dept. Botany), London.