



Plate 1. a. *Lactarius* sp.; b. *Cortinarius* sp.; c. *Agaricus* sp.; d. *Hygrocybe* sp.; e. *Entoloma* sp.; f. Bolete; g. *Cortinarius erythraeus*; h. *Cortinarius* sp.; i. *Torrendia grandis*. Photos a-i: Katrina Syme

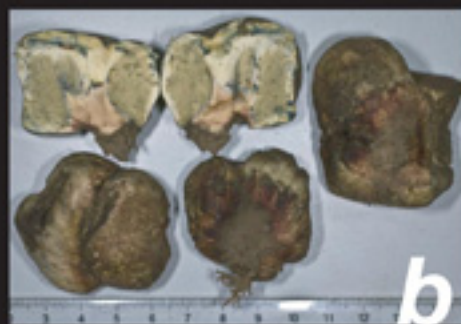


Plate 2. a. & b. *Gastroboletus* sp.; c. *Cordyceps gunnii*; d. *Plectania campylospora*; e. *Microporus xanthopus*; f. *Phallus* sp.; g. *Cypotrampa aspratun*; h. *Poronia erici*; i. *Leotia lubrica*; j. *Scutellinia scutellata*; k. *Hypocrea sulphurea*.

Photos: a & b: Katrina Syme; c: Richard Robinson; d: Patrick Leonard; e-h: Jurrie Hubregtse; i-k: David Catcheside.



a



b



c



d



e



f



g

Plate 3. a. Slime mould; b. *Vibrissea dura*; c. *Ryvardenia campyla*; d. *Leucopaxillus lilacinus*; e. *Filoboletus manipularis*; f. *Ganoderma australe*; g. *Amanita ochrophylla*.

Photos: a, b & f: Ian Bell; c: Elden Marshall; c-e & g: David Catcheside.



Plate 4. a. Wallaby eating ?*Russula*; b. *Hexagonia* sp; c. *Auricularia cornea*; d. *Coltricia cinnamomea*; e. *Postia pelliculosa*; f. *Pholiota* sp.; g. *Stereum ostrea*; h. *Cantharellus* sp.; i. *Auricularia* sp.; j. *Fomitopsis lilacinogilva*.  
 Photos: a: Patrick Leonard; b, e & f: David Catcheside; c & j: Elden Marshall; d: Jolanda Keeble; g: Ian Bell; h & i: Carol Page.